

**PAA422Hu01**

**Polyclonal Antibody to Myelin Associated Glycoprotein (MAG)**

**Organism Species: Homo sapiens (Human)**

***Instruction manual***

**FOR IN VITRO USE AND RESEARCH USE ONLY  
NOT FOR USE IN CLINICAL DIAGNOSTIC PROCEDURES**

---

---

12th Edition (Revised in Aug, 2016)

## **[ PROPERTIES ]**

**Source:** Polyclonal antibody preparation

**Host:** Rabbit

**Purification:** Antigen-specific Affinity Chromatography.

**Traits:** Liquid

**Concentration:** 200µg/mL

**UOM:** 100µg

**Applications:** WB; ICC; IHC-P; IHC-F; ELISA; IP; IF; FCM.

## **[ IMMUNOGEN ]**

**Immunogen:** Recombinant MAG (Ser133~Lys237) expressed in *E.coli*.

**Accession No.:** RPA422Hu01

## **[ APPLICATIONS ]**

Western blotting: 0.5-2ug/ml

Immunocytochemistry in formalin fixed cells: 5-20ug/ml

Immunohistochemistry in formalin fixed frozen section: 5-20ug/ml

Immunohistochemistry in paraffin section: 5-20ug/ml

Enzyme-linked Immunosorbent Assay: 0.05-2ug/ml

Optimal working dilutions must be determined by end user.

## **[ FORMULATION ]**

**Form & Buffer:** Supplied as solution form in 0.01M PBS, pH7.4, containing 0.05% Proclin-300, 50% glycerol.

## **[ QUALITY CONTROL ]**

**Content:** The quality control contains recombinant MAG disposed in loading buffer.

**Usage:** 10uL per well when 3,3'-Diaminobenzidine(DAB) as the substrate.  
5uL per well when used in enhanced chemiluminescent (ECL).

**Note:** The quality control is specifically manufactured as the positive control.  
Not used for other purposes.

**Loading Buffer:** 100mM Tris(pH6.8), 1% SDS, 150mM NaCl, 50% glycerol, 0.02% BPB, 50mM DTT and 0.02% NaN<sub>3</sub>.

## **[ STORAGE AND STABILITY ]**

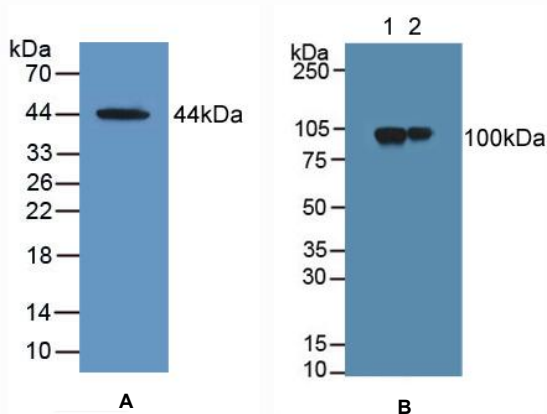
**Storage:** Avoid repeated freeze/thaw cycles.

Store at 4°C for frequent use.

Aliquot and store at -20°C for 12 months.

**Stability Test:** The thermal stability is described by the loss rate. The loss rate was determined by accelerated thermal degradation test, that is, incubate the protein at 37°C for 48h, and no obvious degradation and precipitation were observed. The loss rate is less than 5% within the expiration date under appropriate storage condition.

## **[ IDENTIFICATION ]**



**Figure 1. Western Blot**

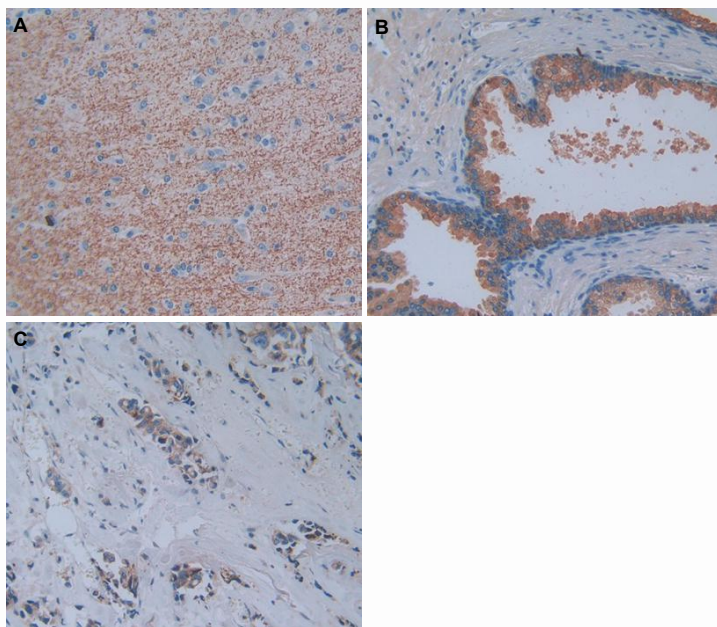
**A. Sample: Recombinant MAG, Human**

**B. Lane1: Rat Brain Tissue**

**Lane2: Mouse Brain Tissue**

**Primary Ab: 3µg/mL Rabbit Anti-Human MAG Ab**

**Second Ab: 1:2000 Dilution of HRP-Linked Guinea pig Anti-Rabbit Ab (Catalog: SAA544Rb59)**



**Figure 2. DAB staining on IHC-P**

**Samples:**

- A. Human Brain Tissue**
- B. Human Prostate Gland Tissue**
- C. Human Breast Cancer Tissue**